

**WHY DO WE NEED STORMWATER
MANAGEMENT?**

The communities in Southwestern Butler County have been negatively affected by flooding and other stormwater impacts, including erosion occurring as the result of intense rainfalls. There has been significant property damage, residents have lost irreplaceable possessions, businesses have lost income and there have been countless hours of clean up, all while being uncertain of when the storm will next occur and what that impact will be. Record-breaking rainfalls in recent years have forced municipalities to scramble to find solutions to reduce these impacts. Addressing these issues has been challenging for reasons that include historical development in the floodway and floodplain, lack of project funding and lack of cooperation across political boundaries. Starting in 2019, Evans City, Harmony and Zelienople Boroughs and Jackson Township have been meeting to identify stormwater infrastructure needs and seek necessary funding.



Flooding in Zelienople Community Park, 2019

**QUESTIONS ABOUT STORMWATER
AND WHAT IS BEING DONE TO MITI-
GATE THE IMPACTS OF POLLUTION**

AND FLOODING?
Contact:
Evans City Borough
724.991.8598
evanscity.us/stormwater

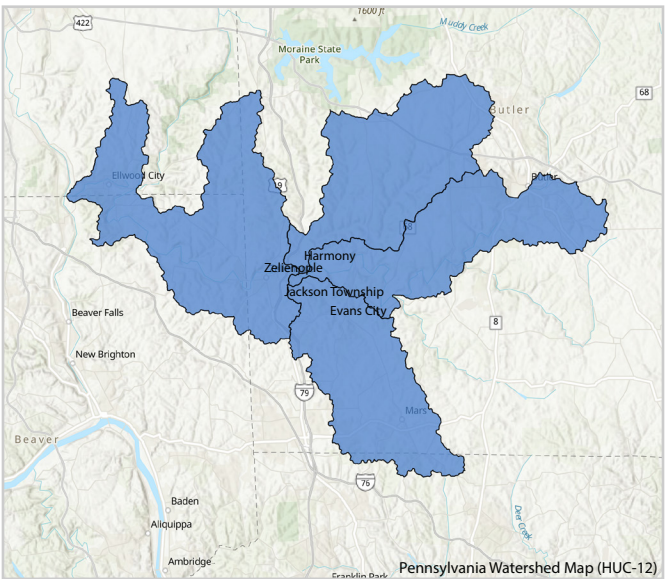
Harmony Borough
724.452.6780
harmony-pa.us

Zelienople Borough
724.452.6610
zelieboro.org

Jackson Township
724.452.5581
jackson-township.com

Stormwater Planning Study:
<https://www.butlercountypa.gov/785/>
**LOWER-CONNOQUENESSING-
STORMWATER-PLANNIN**

**STORMWATER
MANAGEMENT**



**IN SOUTHWESTERN
BUTLER COUNTY**

WHAT IS STORMWATER RUNOFF?

In undeveloped open areas, the water from rain and melting snow either evaporates, gets absorbed into the ground, or flows into nearby streams. In developed spaces, however, pavement and buildings prevent normal ground absorption. Man-made drainage systems are used to capture and direct water into streams, rivers or lakes. Water flowing into these systems is called stormwater runoff.

Stormwater runoff flows **UNTREATED** from our roofs, vehicles, driveways, patios, and roads into the same bodies of water that we use for swimming, fishing and **PROVIDING OUR DRINKING WATER**.

Runoff picks up pollutants like:

- Fertilizers
- Pesticides
- Motor Oil
- Detergents
- Pet Waste

WHAT IS EROSION?

Erosion is the process where the top layer of the ground; soil and rocks are worn away, in this case, by stormwater runoff. This increase the pollutants being washed into streams and waterways.



WHAT IS A MS4?

MS4 is short for, Municipal Separate Storm Sewer System. MS4s consists of a loose network of ditches, swales, culverts, catch basins, underground gravity pipes, and headwalls that are designed to drain stormwater away from property and into local waterways without treatment.

WHY DO WE HAVE MS4 PROGRAMS?

MS4 programs were created to keep pollutants out of surface water. The program has 6 minimum control measures:

- Public Education and Outreach
- Public Participation/Involvement
- Illicit Discharge Detection and Elimination
- Construction Site Runoff Control
- Post-Construction Runoff Control
- Pollution Prevention/Good Housekeeping

The goal of education and implementation of stormwater management standards is to protect the waters for aquatic life, water supply, recreation and fish consumption, and build support for the stormwater management program and promote environmental engagement in the community.